

SESSION 1

FOUNDATIONS IN LGBTQI+ REFUGEE SPONSORSHIP

FOR PRIVATE SPONSORSHIP GROUPS



WHO'S THIS FOR

Session 1

- supports **newly formed sponsorship groups**
- should be taken **before the application submission**

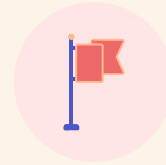


ON THE AGENDA



RESPONSIBILITIES

What does it take to be a member of a sponsorship group? What's expected of us?



OBSTACLES

What are some unique social and mental health challenges LGBTQIA+ refugees may face?

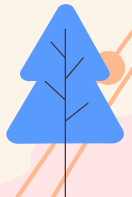


AN IMPORTANT ACKNOWLEDGEMENT



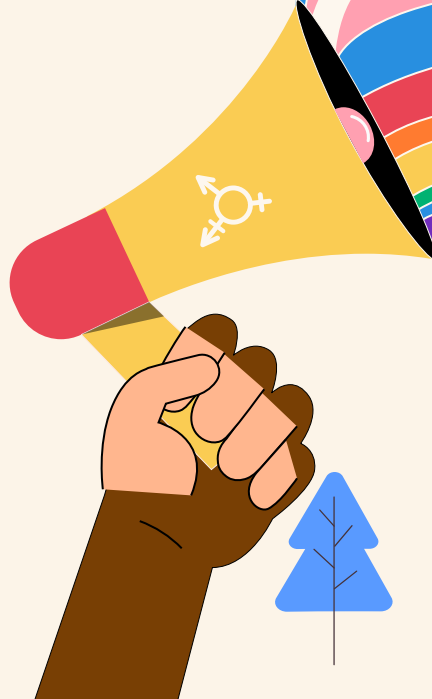
**THIS IS
INDIGENOUS
LAND**

We are extending refuge
in a colonial context



INTRODUCTIONS

1. Who are you?
2. What makes you interested in being a part of a LGBTQIA+ refugee sponsorship group?
3. What are you hoping to learn in our training sessions?



REFUGEE SUPPORTS

Immigration, Refugees and Citizenship Canada (IRCC)

- facilitates arrival
- provides protection
- offers settlement programming and resources

Sponsorship Agreement Holder (SAH) & Constituent Group (CG)

- manages sponsorships



United Nations High Commissioner for Refugees (UNHCR)

- leads and coordinates international protection
- safeguards rights and well-being

Sponsorship Group

- supports refugee
- connects to community services

YOUR RESPONSIBILITIES

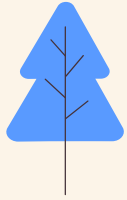
GROUP THESE RESPONSIBILITIES INTO **BEFORE** AND **AFTER** ARRIVAL

- raise required funds
- help connect with cultural community
- prepare refugee for interview
- act in accordance with the sponsorship code of ethics
- meet refugee at the airport, welcome to the community
- find suitable housing
- help with paperwork to set up ID and healthcare
- support in registering children for school or daycare
- support refugee applicants to ensure that the sponsorship process has no delays or complications
- provide orientation to Canada and their new neighbourhood

YOUR RESPONSIBILITIES

How did you do?

BEFORE		AFTER	
raising required funds	preparing refugee for interview	help connect with cultural community	help with paperwork to set up ID and healthcare
act in accordance with the sponsorship code of ethics*	ensure the process has no delays or complications	meet refugee at the airport, welcome to the community	find suitable housing
		support in registering children for school or daycare	provide orientation to Canada and neighbourhood





Who you are informs how you can support a refugee or applicant, just as who a refugee is impacts the supports they will need.



OPPRESSION

Systemic and institutional mistreatment

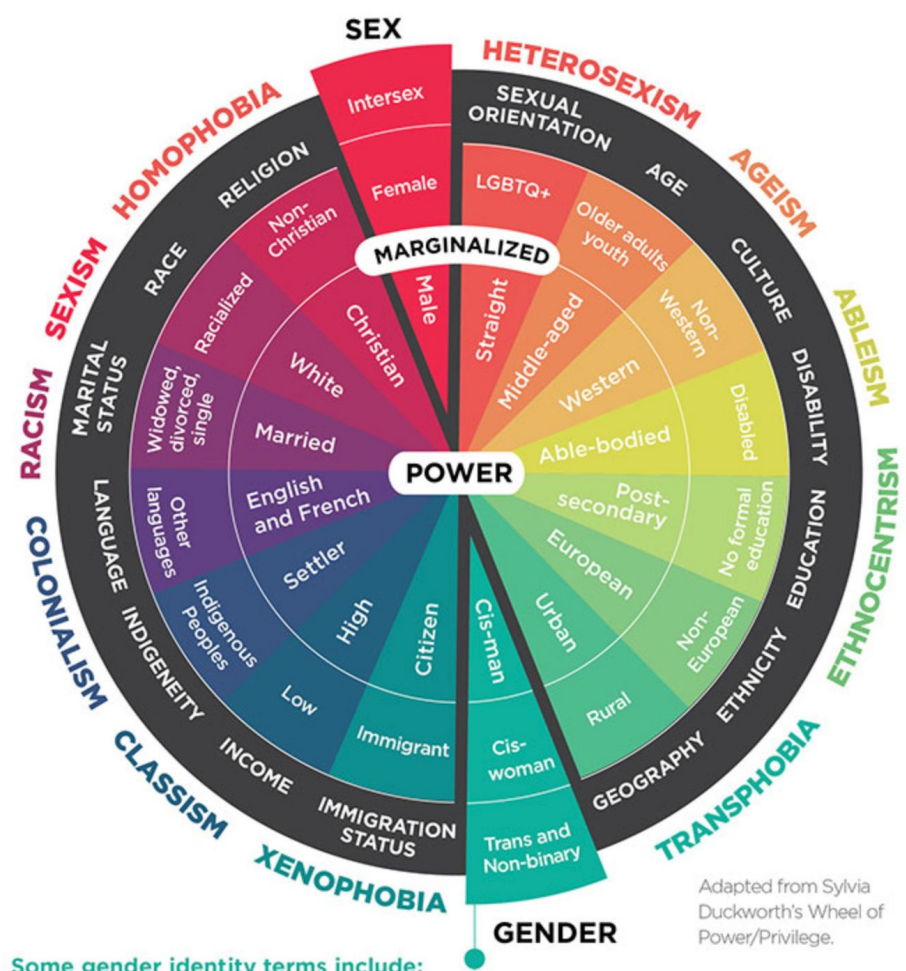
DISCRIMINATION

Unfair treatment based negative beliefs





FORCES AT PLAY



Some gender identity terms include:

Agender	Genderfluid	Gender neutral	Transgender man
Bigender	Genderqueer	Non-binary	Transgender woman

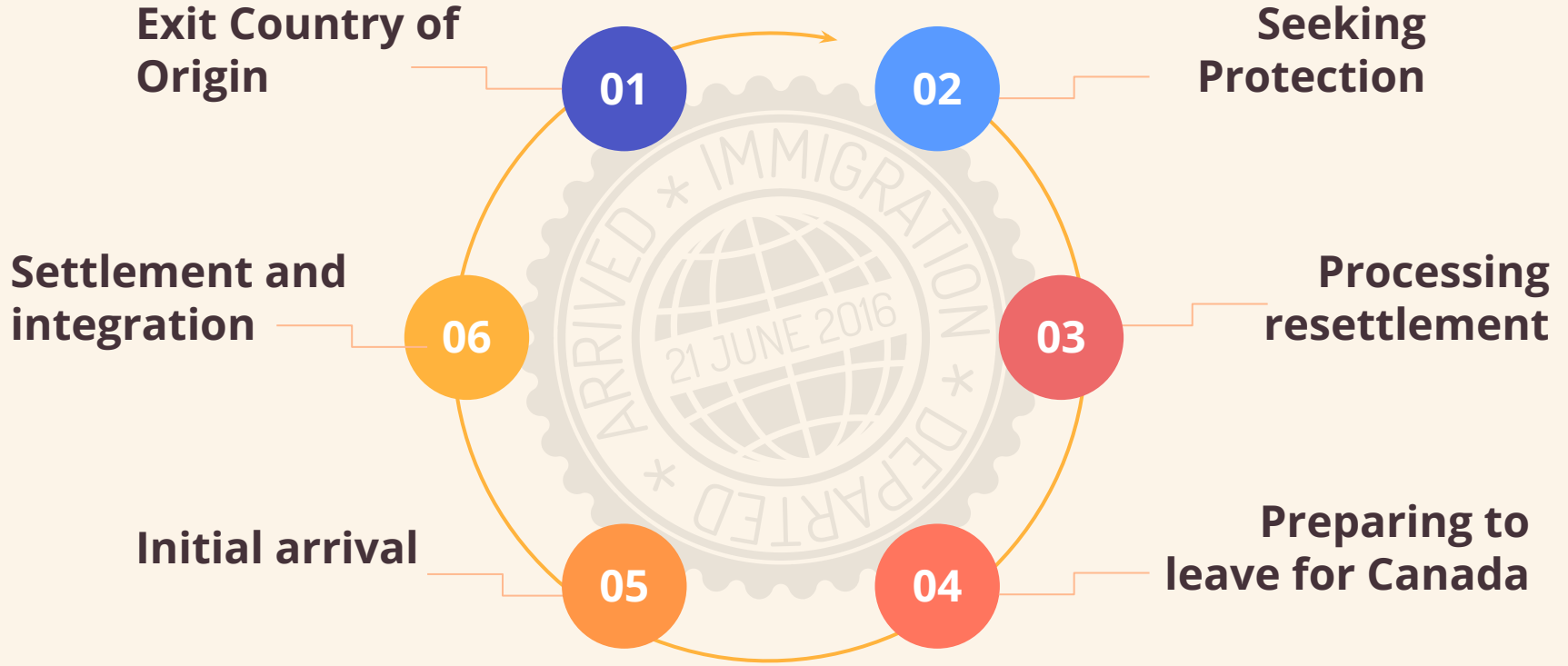
The background features a light cream color with various stylized illustrations. On the left, there is a compass rose and a winding orange path with a solid orange dot. A red tree is positioned at the top center, and a blue cloud is to its right. On the left side, there is an orange tree and a red cloud. On the right side, there is a large orange shape, a blue cloud, and a blue tree. At the bottom left, there is a blue shape, and at the bottom right, there is an orange cloud and a blue tree. The word "INTERSECTIONALITY" is written in large, bold, black capital letters in the center.

INTERSECTIONALITY

“Intersectionality is basically a lens, a prism, for seeing the way in which various forms of inequality often operate together and exacerbate each other and are often greater than the sum of their parts.”

Dr. Kimberlé Crenshaw

JOURNEY MAP



A TALE OF TWO REFUGEES



MYRIAM

- trans woman
- religious majority
- single
- hostile government
- middle class
- mostly closeted
- family rejection

VICTOR

- cis gay man
- racial minority
- partnered
- hostile culture
- middle class
- known activist
- strong community



A photograph of a person's lower half, wearing dark blue jeans and tan leather boots, standing on a paved path. To their right is a large, pink, ribbed rolling suitcase. The background is a blurred outdoor setting with trees and a building. The image is decorated with various travel-themed illustrations: a compass rose in the top left, a blue map outline in the top right, a red tree in the middle left, a blue cloud in the middle right, a yellow tree in the bottom left, a blue tree in the bottom right, and a yellow cloud in the bottom right. A dashed orange line with a yellow dot connects the suitcase to the bottom right corner.

QUESTIONS & ANSWERS

The background features a light beige color with various stylized illustrations. On the left, there is a compass rose and a winding orange path with a solid line and a dashed line. A red tree is at the top, an orange tree is on the left, and a yellow tree is at the bottom. Blue clouds are scattered across the top and right. On the right side, there are large, abstract shapes in orange and pink, and a blue tree at the bottom right.

ASSIGNING ROLES

What's something you can contribute?



THANKS!

**WHAT'S ONE WORD TO
DESCRIBE HOW FEEL AFTER
THIS SESSION?**

SESSION 2

- conflict management
- code of ethics
- respectful relationships between sponsorship groups and refugees

DATE & TIME:
Day, Month, Date
00:00
Location



Fonts & colors used

This presentation has been made using the following fonts:

Raleway

(<https://fonts.google.com/specimen/Raleway>)

Open Sans

(<https://fonts.google.com/specimen/Open+Sans>)

#fcf4e8

#ffe5e5

#ffb98f

#453239

#4c56c5

#599aff

#ed6969

#ff755e

#ff9646

#ffb33d

ALTERNATIVE RESOURCES

Here's an assortment of alternative resources whose style fits that of this template:

VECTORS:

- Organic flat world refugee day illustration



ALTERNATIVE RESOURCES

Here's an assortment of alternative resources whose style fits that of this template:



OUR TEAM



JENNA DOE

You can speak a bit
about this person here



TIMMY JIMMY

You can speak a bit
about this person here

